

Congleton Half Marathon

Marshall Point Number: 7

Distance from Finish: 11.0 miles

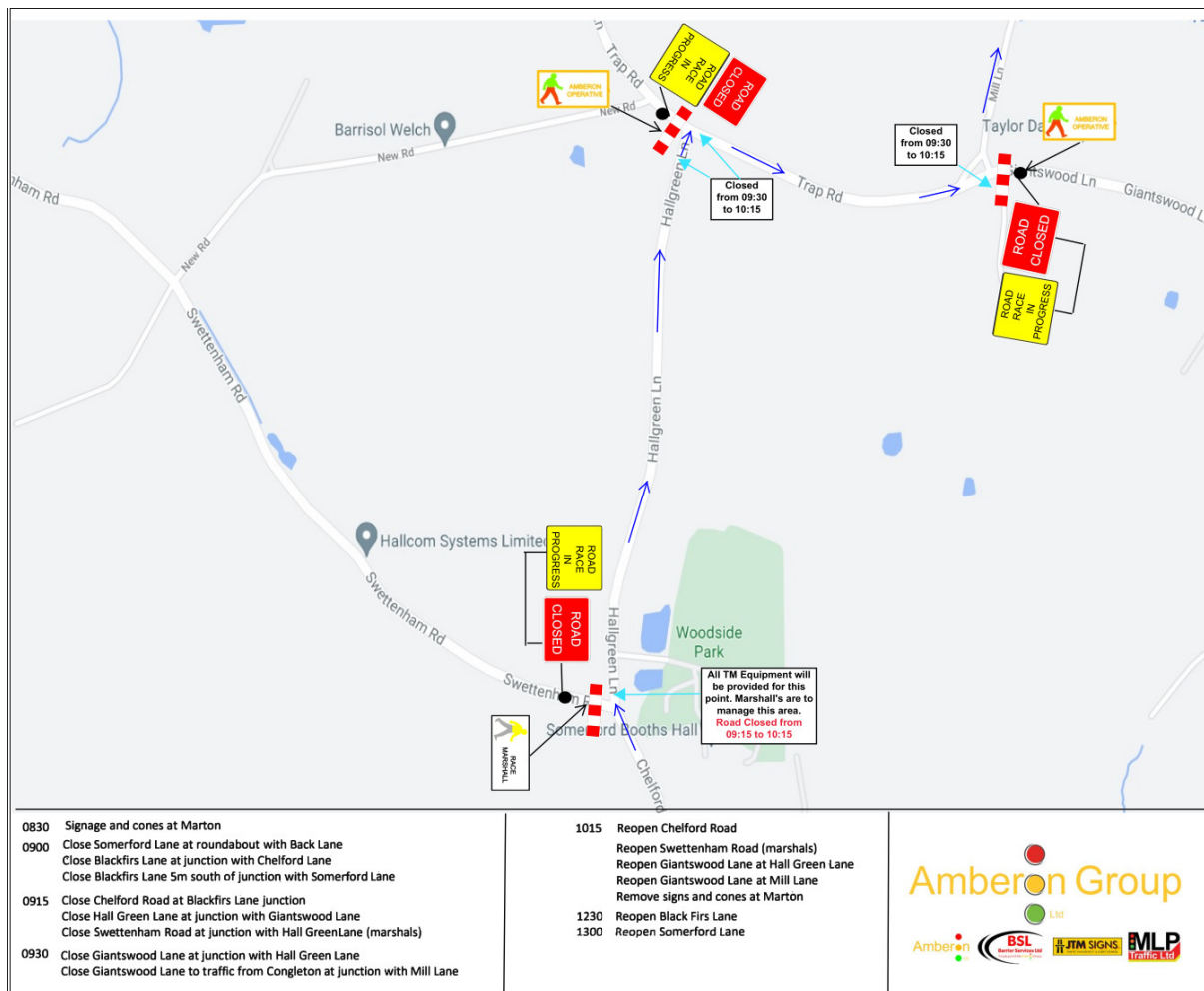
Location: Giantswood Lane/ Mill Lane junction (Outbound only)

Number of marshals assigned: 3

General Instructions:

1. The safety of runners, marshals and other road users is the first priority of all marshals.
2. Make sure you always face oncoming traffic in your marshal position.
3. Please park cars safely and ensure you don't obstruct the road for runners or drivers..
4. Provide directions to runners as specified below. Please use hand signals and spoken instructions; tired runners don't always listen!
5. If a runner retires, please contact Marshal Control and we'll try to collect them as soon as possible.
6. Please offer words of encouragement, a smile, information on distance remaining etc.

Road Closure:



Position Specific Instructions (see picture):

Marshal 1 to direct runners down Mill Lane on inside of grass triangle

Marshal 2 to warn drivers approaching along Giantswood Lane of runners

Direct runners to turn Left into Mill Lane. Runners to cut corner onto Mill Lane
Instruct to run on left

Equipment:

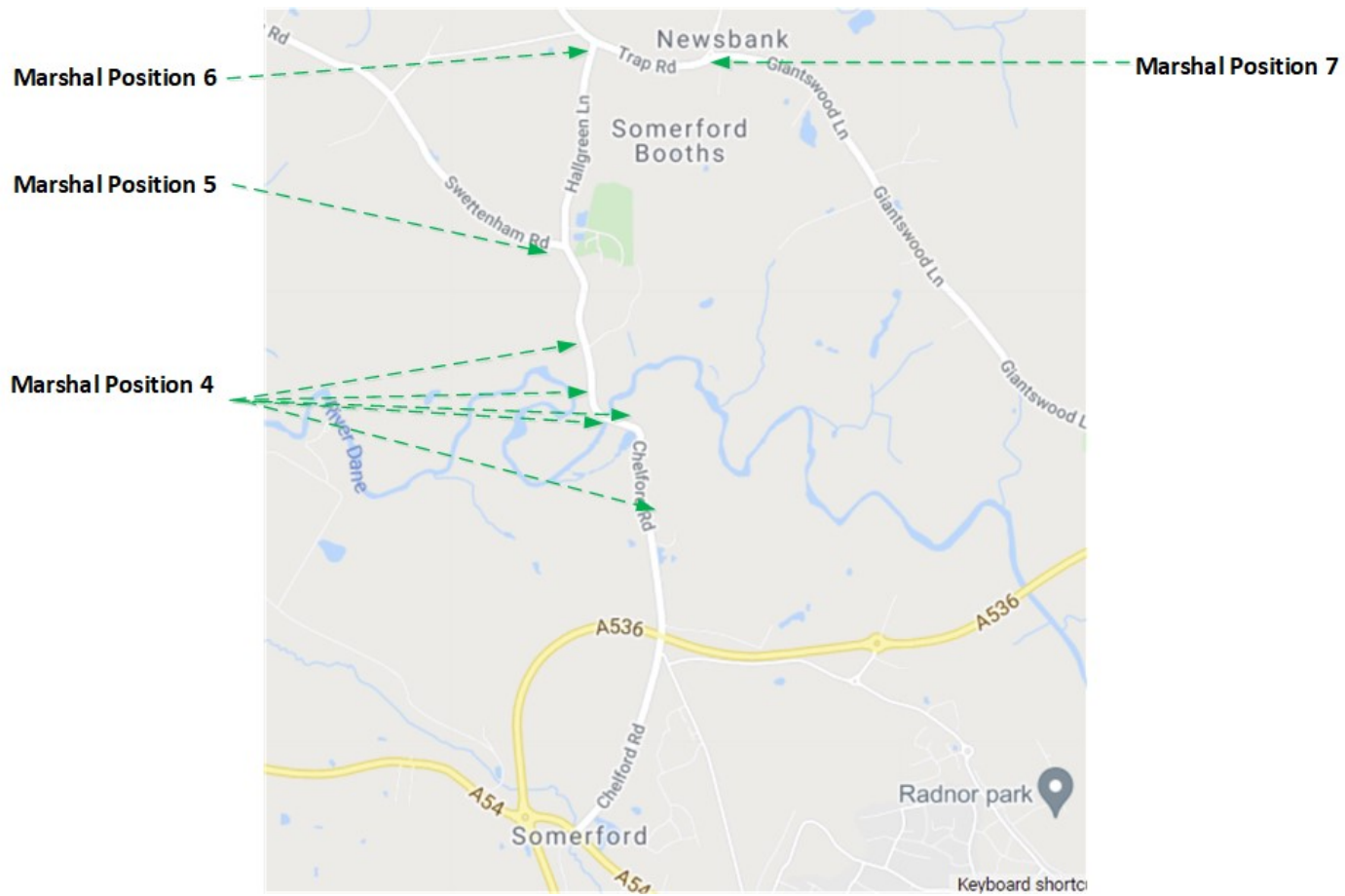
Bib – please wear these for your safety

Mobile Phone with number of marshal coordinators at marshal control

At End:

1. Wait until Sweeper passes and confirms all runners now passed by.
2. Return bib to Marshal Control at Congleton High School and drop it into the bin.

Location of Position 7



Position 6 /7 OUTWARD Plan of Hall Green Lane Junction with Giantswood Lane and Giantswood/ Mill Lane Junction

